

# BUSHINGS

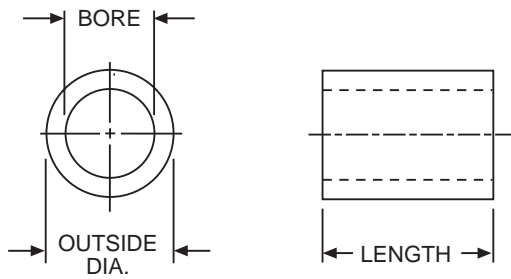
## SOFT STEEL



**BORE SIZES FROM 3/16" TO 1-1/4"**

**MULTI-PURPOSE BUSHINGS** suitable for use as hole reducers, spacers, standoffs or slip bushings.

**ADAPTABLE FOR OTHER USES** including wear sleeves, liners or cutting arbor studs.



ALL DIMENSIONS IN INCHES  
ORDER BY CATALOG NUMBER OR ITEM CODE

Bores	Outside Diameter	Length	Catalog No.
3/16	1/4	5/8	18510
	5/16		18512
	3/8		18516
1/4	5/16	5/8	18514
	3/8		18518
	1/2	3/4	18522
		1	18524
5/16	3/8	5/8	18520
	1/2	3/4	18526
		1	18528
3/8	1/2	3/4	18530
		1	18532
	5/8	3/4	18534
7/16	5/8	1-1/4	18536
		3/4	18538
		1-1/4	18540
1/2	5/8	3/4	18542
		1	18544
		1-1/4	18546
	3/4	3/4	18554
5/8	3/4	1	18556
		3/4	18560
		1	18562
3/4	7/8	1-1/4	18566
	1	1-1/4	18568
		1-1/2	18574
		2	18626
7/8	1-1/2	1-1/2	18606
		1	18576
		1-1/4	18596
1	1-3/8	2	18602
		2	18622
		1-1/8	1-1/4
1-1/4	1-3/8	2	18604
		1-1/2	18614
		2	18624

### STANDARD TOLERANCES

DIMENSION		TOLERANCE
BORE	All	±.0005
	Up to 1-1/4	+.0005 +.0015
O.D.	Over 1-1/4	+.001 +.002
	Up to 1"	+.000 -.007
LENGTH	Over 1"	+.000-.010